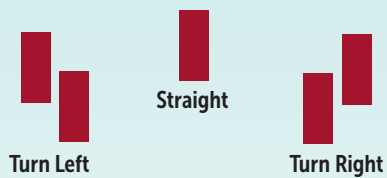


## What to Expect

- **Neighborhood Parks and Recreation Centers** generally feature short, paved trails with water and facilities unless otherwise noted.
- **Conservation Park** trails provide more of a natural experience than your typical Neighborhood Park trail. Though some are paved, most are primitive trails that take you through a variety of natural habitats ranging from open pine flatwoods to shady wetland forests. Most of the Conservation Parks have amenities such as restrooms, playgrounds, and boardwalks.
- **Nature Preserve** trails take the experience up several notches by leaving civilization behind. Development is kept to a minimum to protect sensitive habitats and wildlife. Trailheads have small, unpaved parking lots, a fence with a walk-through entrance, and a small kiosk with trail information. Nature Preserves do not have restrooms or running water. Trails are unpaved, have rougher terrain, and are marked with blazes.
- **Florida State Parks and Other Trails** take the Hiking Spree journey to trails and facilities not operated by Hillsborough County. The conditions of these trails, their accessibility, and available facilities can vary. Hikers should familiarize themselves with these trails prior to departing to enjoy their hiking experience at these locations.
- **What are blazes?** Many nature preserve trails are marked a certain color, usually red, blue, or yellow. These paint markings on posts or trees are blazes and will guide you in the proper direction. If you come to an intersection, look for a blaze to indicate which direction to hike. Always carry a map when you are hiking a nature preserve.



## New to Hiking?

If you are new to hiking, we recommend getting your hiking legs at a neighborhood park trail, and then progressing to the conservation parks and nature preserves. When hiking, always bring:

- The correct trail map for your destination
- A compass or GPS
- Plenty of drinking water
- Appropriate shoes
- Sun protection



## This Year's Badge

This year's badge features the Zebra Longwing (*Heliconius charithonia*), Florida's state butterfly. Adults have long, narrow, black wings with light yellow stripes and can be seen flying slowly and gracefully during all months of the year throughout central and south Florida. Zebra longwings utilize several species of passionflower vines, including the corkystem passionflower (*Passiflora suberosa*) which is featured on this year's badge. As caterpillars, they absorb some of the toxins from these plants, making them less appetizing to predators. The caterpillar's stark white color with spiky black spots also warns predators to stay away. Adults have a special adaptation that allows them to eat pollen in addition to nectar, helping them survive for several months, unlike the two-to-four-week lifespan of the average butterfly. This extra pollen also helps females lay more eggs—can you spot them in this year's badge design? They are a social species that roost together at night, with the older butterflies choosing the best sleeping spots. Take inspiration from this year's mascot and Emerge and Explore all that the Hiking Spree has to offer.

## Audio Tours

- Learn more about your hike at your own pace with our app!



Download our  
Audio Tour App  
Hillsborough FL  
Nature Tours

[HCFL.gov/audiotour](https://www.hcfl.gov/audiotour)

Visit  
[HCFL.gov/HikingSpree](https://www.hcfl.gov/HikingSpree)  
to register and for more  
information, including the  
new trails.



# Emerge & Explore

Get up, get out, and explore  
Hillsborough County's wild side  
with the Hiking Spree!

**Dec. 1, 2024 to April 30, 2025**

Whether long or short, paved, or rugged, the Hiking Spree trails have something to offer hikers of all ages and abilities. Hike eight trails and earn a patch, brass medallion, or dog bandana for your four-legged hiking companion.



Hillsborough  
County Florida



Hillsborough  
County Florida

## How The Hiking Spree Works

- Register for the Hiking Spree at [HCFL.gov/HikingSpree](https://www.hcfl.gov/HikingSpree) or by scanning the QR code. Complete a minimum of eight designated trails between Dec. 1, 2024 to April 30, 2025. Participants may hike on their own, with others, or on guided hikes. Check [HCFL.gov/HikingSpree](https://www.hcfl.gov/HikingSpree) for upcoming hikes. Some sites have entrance and parking fees.



### Hikers Requiring Accessible Trails

- Hikers who require accessible trails may repeat any trail twice for credit, provided they occur on different dates.

### Dog Hikers

- Hikers are encouraged to hike with their dog. Dogs must be registered in the Hiking Spree, just like human hikers, and are eligible for their own rewards after completing their Hiking Spree form. A dog must always be kept on a leash while hiking the trails.

### Safety

- Be sure to dress appropriately, check weather conditions, and bring plenty of water.
- Trail Classes: A-All Purpose, B-Basic, C-Primitive
- Ratings: **1-Easy**, **2-Moderate**, **3-Strenuous** (rough terrain)

## Rewards

- When you complete the Hiking Spree by hiking eight trails, please fill out and submit the online completion form located at [HCFL.gov/HikingSpree](https://www.hcfl.gov/HikingSpree) by April 30, 2025, to receive your reward. Examples of this year's rewards can be found at [HCFL.gov/HikingSpree](https://www.hcfl.gov/HikingSpree). You will be able to pick up your limited-edition Hiking Spree medallion, patch, or dog bandana at one of these locations\* after submitting your completion form:

**Bell Creek Nature Preserve**  
10940 McMullen Rd.  
Riverview, FL 33569

**Conservation Parks Admin Office**  
13173 N. U.S. Hwy. 301  
Thonotosassa, FL 33592

**Edward Medard Conservation Park**  
6140 Turkey Creek Rd.  
Plant City, FL 33567

**Gardenville Recreation Center**  
6219 Symmes Rd.  
Gibsonton, FL 33534

**Jackson Springs Recreation Center**  
8620 Jackson Springs Rd.  
Tampa, FL 33615

**Lettuce Lake Park**  
6920 E. Fletcher Ave.  
Tampa, FL 33637

**Lithia Springs Conservation Park**  
3932 Lithia Springs Rd.  
Lithia, FL 33547

**Miller Park & Life Center**  
6105 E. Sligh Ave.  
Tampa, FL 33617

**Ruskin Recreation Center**  
901 6th St. SE  
Ruskin, FL 33570

**Westchase Park & Recreation Center**  
9791 Westchase Dr.  
Tampa, FL 33626

\* Reward redemption sites have varying hours of operation. Check prior to departure for your reward.

Hikers who need accessible accommodations for Hiking Spree reward redemption should contact

[HikingSpree@HCFL.gov](mailto:HikingSpree@HCFL.gov).

Check the trails you hike.

Park / Address	Trail Name	Miles	Class	Rating
<b>Hiker's Choice</b>	Anywhere, Earth			
<b>Neighborhood Parks and Recreation Centers - Short, Paved Trails with Water and Facilities</b>				
<b>Carrollwood Village Park</b> 4680 West Village Drive, Tampa, FL 33624	Laurel Oak	0.8	A	1
<b>Clayton Park</b> 619 Vonderburg Dr, Brandon, FL 33511	Clayton Lake Fitness Trail	0.6	A	1
<b>Dover District Park</b> 2820 Gallagher Rd., Dover, FL 33527	Arrowhead Fitness Trail	1.2	A	1
<b>Ed Radice Sports Complex</b> 14720 Ed Radice Drive, Tampa, FL 33626	Radice Park Fitness Trail	1.25	A	1
<b>Ruskin Park &amp; Recreation Center</b> 901 6th Street S.E., Ruskin, FL 33570	Quiet Pines Fitness Trail	1.2	A	1
<b>Seffner Comm"UNITY" Park &amp; Gardens</b> 406 N. Kingsway Rd., Seffner, FL 33584	Hickory Fitness Trail	0.75	A	2
<b>Wortham Park</b> 12108 Rhodine Rd., Riverview, FL 33547	Bluestem Hiking Trail	1.4	B	2
<b>Conservation Parks - Mid-Range, Well-Maintained Paths and Trails</b>				
<b>Alderman's Ford Conservation Park</b> 100 Alderman's Ford Park Drive, Lithia, FL 33547	Picnic Trail and Rivers Edge Boardwalk <small>No dogs on boardwalk</small>	2.3	A	1
<b>Edward Medard Conservation Park</b> 6140 Turkey Creek Road, Plant City, FL 33567	Singing Bluffs, Levee Trail	1.4, 2.6	C, B	3, 2
<b>Flatwoods Conservation Park</b> 14302 Morris Bridge Road, Thonotosassa, FL 33592	The Big Loop in the Woods	7	A	3
<b>Lake Rogers Conservation Park</b> 9010 N. Mobley Road, Odessa, FL 33556	Lakeside Trail	2.3	B	2
<b>Lettuce Lake Conservation Park</b> 6920 Fletcher Avenue, Tampa, FL 33637	Hammock Run	1.26	A	2
<b>Nature Preserves - No Facilities. Subject to Daily Conditions</b>				
<b>Alafia River Corridor Nature Preserve- North</b> 9256 South County Rd. 39, Plant City, FL 33567	Jurassic Trail	5.5	C	2
<b>Cockroach Creek Greenway</b> 4110 Valroy Rd., Ruskin, FL 33570	Felda Ridge Trail	3.8	B	2
<b>Cypress Creek Nature Preserve</b> 18000 Lizard's Tail Road, Tampa, FL 33647	Swamp River Ramble	3.3	C	2
<b>Fishhawk Creek Nature Preserve North</b> 3932 Lithia Springs Road, Lithia, FL 33547	Riparian Romp	3.1	C	2
<b>Lower Green Swamp Nature Preserve</b> 3540 East Knights Griffin Rd, Plant City, FL 33565	Quail Trail	7	C	3
<b>Rhodine Scrub Nature Preserve</b> 12108 Rhodine Rd. Riverview, FL 33579	Sand Pine Way	3.84	C	2
<b>Rocky Creek Trails Nature Preserve</b> 7415 Manhattan Drive, Tampa, FL 33625	Creekside Stroll	0.4	B	1
<b>Florida State Parks and Other Trails</b>				
<b>Micintosh Preserve</b> 775 East Knights Griffin Rd, Plant City, FL 33565	Live Oak Loop (Red Trail)	1.5	A	1
<b>Little Manatee River State Park</b> 215 Lightfoot Rd, Wimauma, FL 33598	North Hiking Trail	6.5	C	3
<b>Hillsborough River State Park</b> 15402 U.S. 301 North, Thonotosassa, FL 33592	Wetland Trail	1.6	C	3